



**DLSUMC**  
DE LA SALLE UNIVERSITY MEDICAL CENTER  
*Nurturing your health*

## GASTROENTEROLOGY AND DIGESTIVE ENDOSCOPY



DLSUMC uses state-of-the-art equipment and cutting-edge technology for the detection of early gastrointestinal malignancies and treatment of early cancer.

SCAN TO INQUIRE  
ABOUT OUR SERVICES







# DLSUMC

DE LA SALLE UNIVERSITY MEDICAL CENTER

Nurturing your health

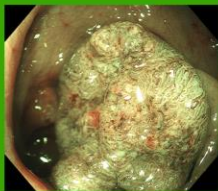
## SERVICES AVAILABLE AT THE DLSUMC GASTROENTEROLOGY AND DIGESTIVE ENDOSCOPY UNIT:

- Gastroenterology outpatient consultation
- Upper GI endoscopy / EGD / Gastroscopy
- Lower GI endoscopy / Colonoscopy
- Third space endoscopy (upper and lower GI)
- Magnifying endoscopy with narrow band imaging (upper and lower GI) and chromoendoscopy for detection of early GI cancer
- Endoscopic retrograde cholangiopancreatography (ERCP)
- Stenting (esophageal, biliary, and colon)
- Rigid anoscopy / Proctosigmoidoscopy
- Endoscopic biopsy, Paracentesis
- Endoscopic hemostasis
  - Injection sclerotherapy
  - Endoclip application
  - Argon plasma coagulation (APC)
- Endoscopic mucosal resection (EMR)
- Endoscopic submucosal dissection (ESD) for treatment of early GI cancer
- Peroral endoscopic myotomy (POEM) for achalasia
- Electrosurgical hemostatic forceps application (soft coagulation)
- Snare / Piecemeal polypectomy
- Foreign body extraction (upper and lower GI tract)
- Percutaneous endoscopic gastrostomy (PEG) tube insertion
- Rubber band ligation (RBL)
- Sclerosing injection treatment (SIT) for hemorrhoids
- Intra-gastric balloon deployment (BIB) for obesity

EARLY CANCER SEEN UNDER  
REGULAR ENDOSCOPY  
USING WHITE LIGHT



EARLY CANCER SEEN UNDER  
NARROW BAND IMAGING  
WITH MAGNIFICATION



VIEW AFTER ENDOSCOPIC  
MUCOSAL RESECTION  
OF THE MALIGNANT LESION



The De La Salle University Medical Center (DLSUMC) upped the ante on its fight against cancer through an endoscopic equipment capable of magnifying the superficial inner lining (mucosa) of the gastrointestinal tract (GIT) to at least 40 times. This magnifying chromoendoscopy makes subtle changes in color and texture of the mucosa easily detectable. So, the differentiation between benign and pre-malignant areas is done in real-time.

The adage that "gastrointestinal cancer is a preventable disease by means of early detection and prompt treatment" is now in full actualization at DLSUMC where in-house expertise in magnifying chromoendoscopy and minimally invasive (endoscopic) removal of early tumors, namely *Endoscopic Mucosal Resection (EMR)* and *Endoscopic Submucosal Dissection (ESD)* combine well with the state-of-the-art equipment (Olympus, Evis Lucera GI Video Scopes, 290 series) in the battle against cancer.

### DE LA SALLE UNIVERSITY MEDICAL CENTER GASTROENTEROLOGY AND DIGESTIVE ENDOSCOPY UNIT

2<sup>nd</sup> Floor, Medical Arts Center

Governor D. Mangubat Avenue, City of Dasmariñas, Cavite

Cavite line: (6346) 481-8000 loc. 1108 • Manila line: (632) 8988-3100 loc. 1108

Operating Hours: Monday-Saturday, 8AM-5PM

[www.dlshsi.edu.ph/dlsumc](http://www.dlshsi.edu.ph/dlsumc)

[www.dlshsi.edu.ph/dlsumc](http://www.dlshsi.edu.ph/dlsumc)

[f](#) [t](#) [@](#) [dlsumcofficial](#)

DLSUMC is a service of DLSMHSI

